



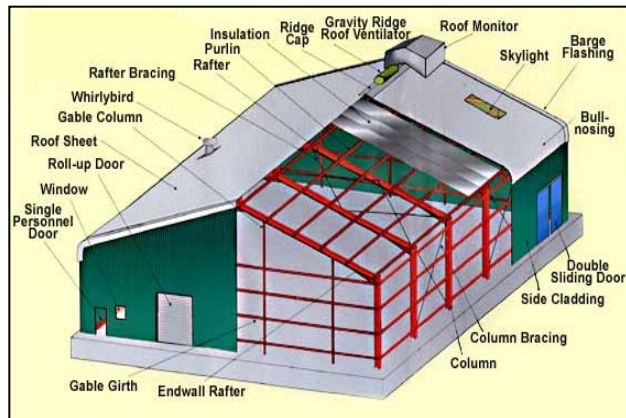
Unique Core Products Africa (PTY) LTD.

# CORE STORAGE SOLUTIONS

*"SAFETY FIRST"*

# Core Sheds

... a total turnkey operation from the planning and design to manufacture and construction



Wesizwe Platinum Mine - RSA



# Geological Work Bench

A modular, versatile and flexible work bench that can be adapted to suit the user – a key requirement in ergonomic work bench design.

## Benefits:

- transportable and easily assembled on site
- Robust – can be used at the drill site or in the core shack.
- Ergonomic- allowing the user to stand or sit while logging and preparing cores.
- Provides for a smooth, silent and safe operation.

## Features:

- Modular design
- Manufactured from extruded aluminum profiles and precision engineered
- Full adjustable in height, width and inclination
- Utilizes small plastic casters mounted in a roller bed



# Mobile Stacker

.....integral part of an efficient and effective core management system

**Combines the accessibility of a core tray Racking system with the cost effectiveness of a Stacking system.**

- **eliminates the necessity of expensive forklift and trained forklift drivers**
- **Provides direct and immediate access to core trays**
- **Greater maneuverability allows for narrower isles and improved efficiencies**
- **Safe . eliminates lifting of core trays above shoulder height**

**Manufactured from extruded aluminum profile for extra strength and durability.**

**Easy to assemble, kit form makes it easy to ship and assemble on site**





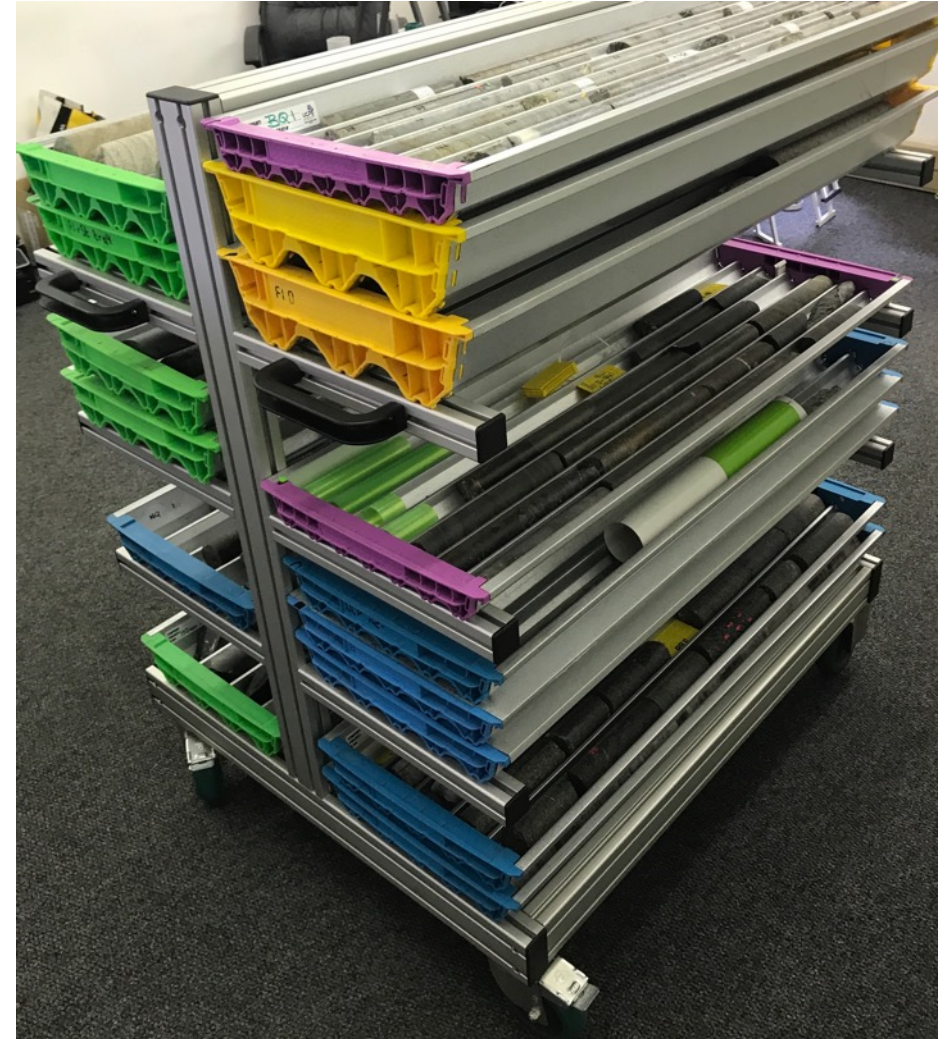
# Mobile Stacker

"It's as if you are moving a trolley around a supermarket, except you are moving 2tons of core!"



# Mobile Stacker

Tray	BQ	NQ	HQ	PQ
Core Diameter	36.5	47.6	63.5	85
Metre per Tray	7	5	4	3
Average tray mass Kg	17.72	21.52	30.64	41.18
Max. tray mass Kg	31.50	37.50	54.40	72.00
Total Weight per tray	34	40	57	76
Trays per Staker	44	36	30	28
meters core per Stacker	308	180	120	84
Normal weight per Stacker (kg)	780	775	919	1153
Maximum weight per staker (kg)	1487	1440	1716	2133
Meters of core stored per m2	271	158	105	74

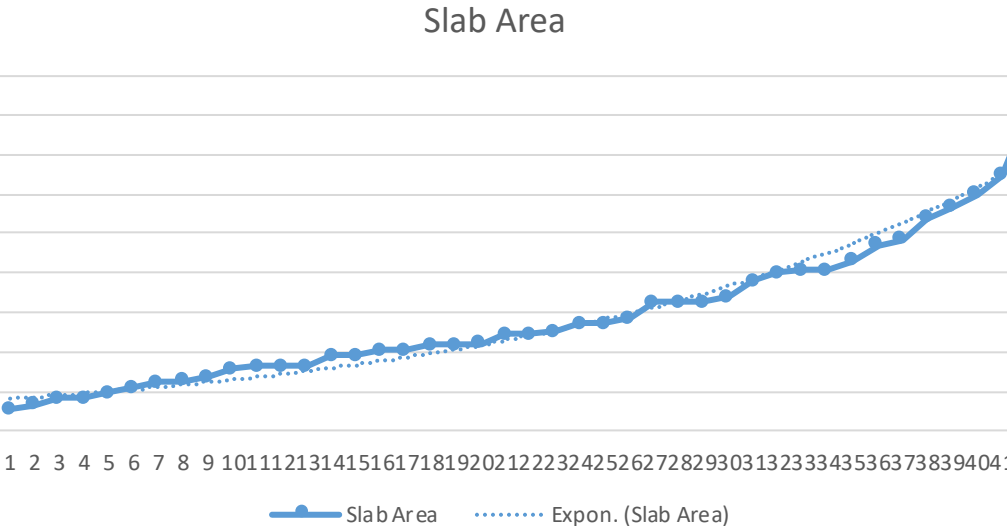




Optimal core shed size:

PRICES AT 30 SEPTEMBER 2005

DESCRIPTION	Span	Length	Slab Area	PRICE PER M <sup>2</sup>	MATERIAL	ERECTION	TOTAL	PRICE PER M <sup>2</sup>
6 x 9 x 3m	6	9	54	R 225	R11 122	R1 009	R12 131	R 225
6 x 13,5 x 3m	6	13.5	81	R 206	R15 184	R1 476	R16 660	R 206
6 x 18 x 3m	6	18	108	R 197	R19 302	R1 968	R21 270	R 197
6 x 22,5 x 3m	6	22.5	135	R 189	R23 116	R2 461	R25 577	R 189
6 x 27 x 3m	6	27	162	R 186	R27 235	R2 952	R30 187	R 186
6 x 31,5 x 3m	6	31.5	189	R 182	R31 046	R3 445	R34 491	R 182
6 x 36 x 3m	6	36	216	R 181	R35 166	R3 938	R39 104	R 181
7 x 9 x 3m	7	9	63	R 209	R11 963	R1 185	R13 148	R 209
7 x 13,5 x 3m	7	13.5	94.5	R 192	R16 372	R1 777	R18 149	R 192
7 x 18 x 3m	7	18	126	R 184	R20 908	R2 296	R23 204	R 184
7 x 22,5 x 3m	7	22.5	157.5	R 177	R25 063	R2 870	R27 933	R 177
7 x 27 x 3m	7	27	189	R 175	R29 564	R3 445	R33 009	R 175
7 x 31,5 x 3m	7	31.5	220.5	R 171	R33 721	R4 019	R37 740	R 171
7 x 36 x 3m	7	36	252	R 170	R38 221	R4 594	R42 815	R 170
9 x 9 x 3m	9	9	81	R 195	R14 300	R1 475	R15 775	R 195
9 x 13,5 x 3m	9	13.5	121.5	R 181	R19 792	R2 214	R22 006	R 181
9 x 18 x 3m	9	18	162	R 175	R25 351	R2 952	R28 303	R 175
9 x 22,5 x 3m	9	22.5	202.5	R 169	R30 499	R3 690	R34 189	R 169
9 x 27 x 3m	9	27	243	R 167	R36 047	R4 429	R40 476	R 167
9 x 31,5 x 3m	9	31.5	283.5	R 164	R41 195	R5 167	R46 362	R 164
9 x 36 x 3m	9	36	324	R 162	R46 742	R5 907	R52 649	R 162
12 x 13,5 x 3,65m	12	13.5	162	R 197	R29 145	R2 756	R31 901	R 197
12 x 18 x 3,65m	12	18	216	R 189	R37 052	R3 675	R40 727	R 189
12 x 22,5 x 3,65m	12	22.5	270	R 182	R44 457	R4 594	R49 051	R 182
12 x 27 x 3,65m	12	27	324	R 179	R52 364	R5 512	R57 876	R 179
12 x 31,5 x 3,65m	12	31.5	378	R 175	R59 769	R6 431	R66 200	R 175
12 x 36 x 3,65m	12	36	432	R 174	R67 675	R7 351	R75 026	R 174
15 x 13,5 x 3,65m	15	13.5	202.5	R 201	R36 687	R3 937	R40 624	R 201
15 x 18 x 3,65m	15	18	270	R 190	R46 764	R4 594	R51 358	R 190
15 x 22,5 x 3,65m	15	22.5	337.5	R 184	R56 222	R5 742	R61 964	R 184
15 x 27 x 3,65m	15	27	405	R 181	R66 303	R6 920	R73 223	R 181
15 x 31,5 x 3,65m	15	31.5	472.5	R 177	R75 750	R8 039	R83 789	R 177



Our clients:

Project	Jan-07	#####	#####	#####	#####	Jul-07	#####	#####	#####	#####	Jan-08	#####	#####	#####	#####	#####	Jul-08	#####	#####	#####	#####	#####	Jan-09	#####
1 Buljanhulu Mine-Shed - Tanzania																								
2 Alto Quilo - Angola																								
3 RB Minerals Sampling Shed - RSA ?							?																	
4 TFM - Logging Shed - DRC																								
5 TFM Core Shed 1-DRC																								
6 TFM Core Shed 2 - DRC																								
7 Pilanesberg Platinum Mines-Combo Shed - RSA																								
8 Wesiwe Platinum - Racks - RSA																								
9 Zambesi Coal Resources - Combo Shed - Zambia																								
10 Ghanfooda Mine - Racks - Libia																								
11 TFM Core Shed 3- DRC																								
12 TFM Core Shed 4- DRC																								
13 TFM Core Shed 5- DRC																								
14 Zambia - Racking MOGGS - Zambia															?									
15 TFM Core Shed 6- DRC																								
16 TFM Core Shed 7- DRC																								
17 TFM Core Shed 8 - DRC																								
18 BSG Resources - Guinea																								





## ***Our Team:***

*.....together we have a total of 60 years experience in the management and design of core storage equipment.*

- Grant Wilson
- Tshego Majane
- Megan du Plooy
- John Wilson BSc (hons) John has over 30 years experience
- Jan Pyper
- Cole Minnar

Adjustable, using an Allen key, the shelves can be used to:

Demarcate and highlight important intersections

Security, the shelves together with the UCP core tray lids, can be used to clamp certain important intersections ensuring

Move to improve the stacking density taking the various sizes of core tray.

Air freight, the important trays can be protected with the Core Lids and by adjusting the shelves securely lock the stack of

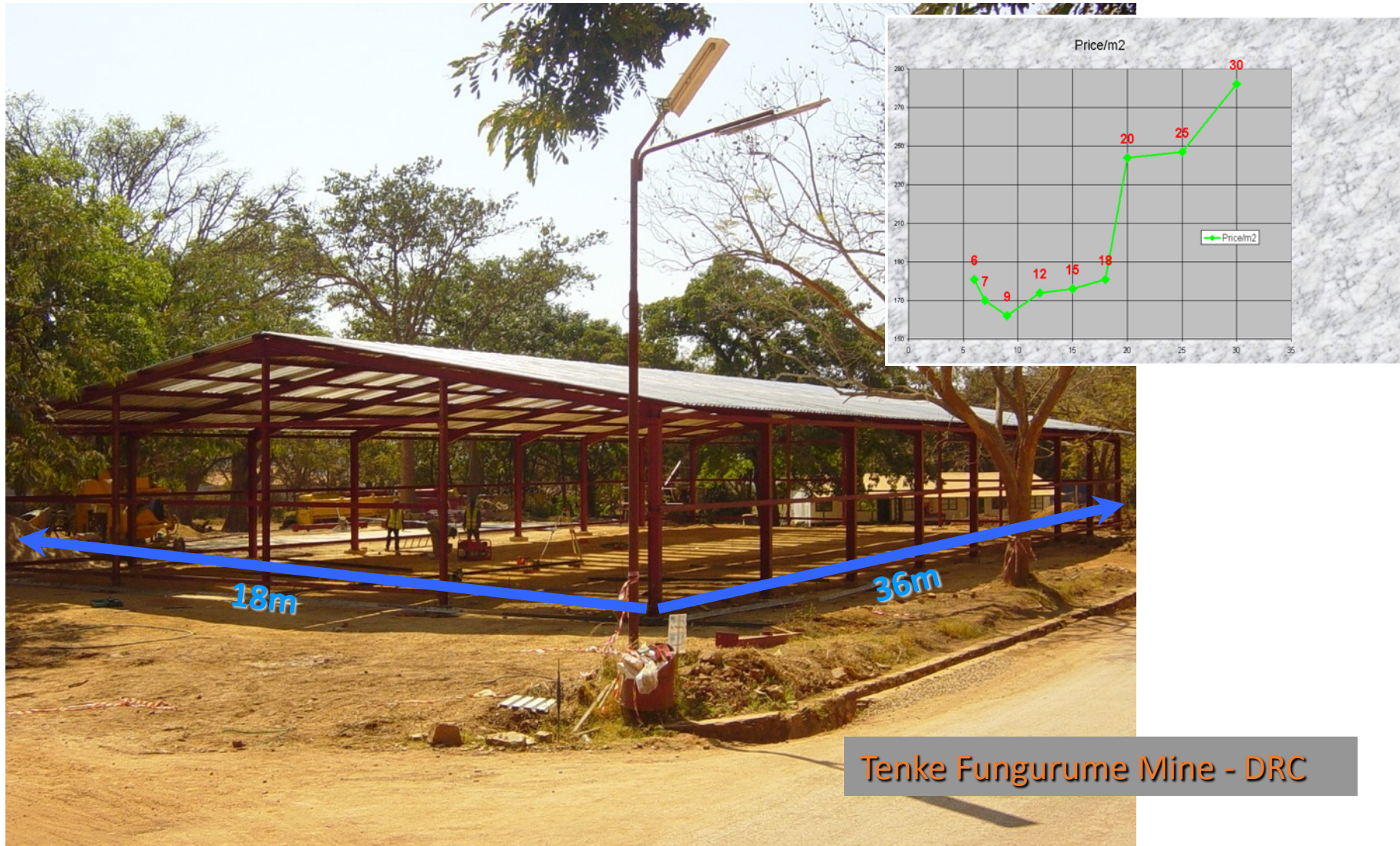
Move the core trays from the delivery vehicle to the logging area in the core shack.



.....this produces an undistorted high resolution image of the core tray, with the BOC orientation line precisely positioned in the center of each row



# Core Shed Project Management



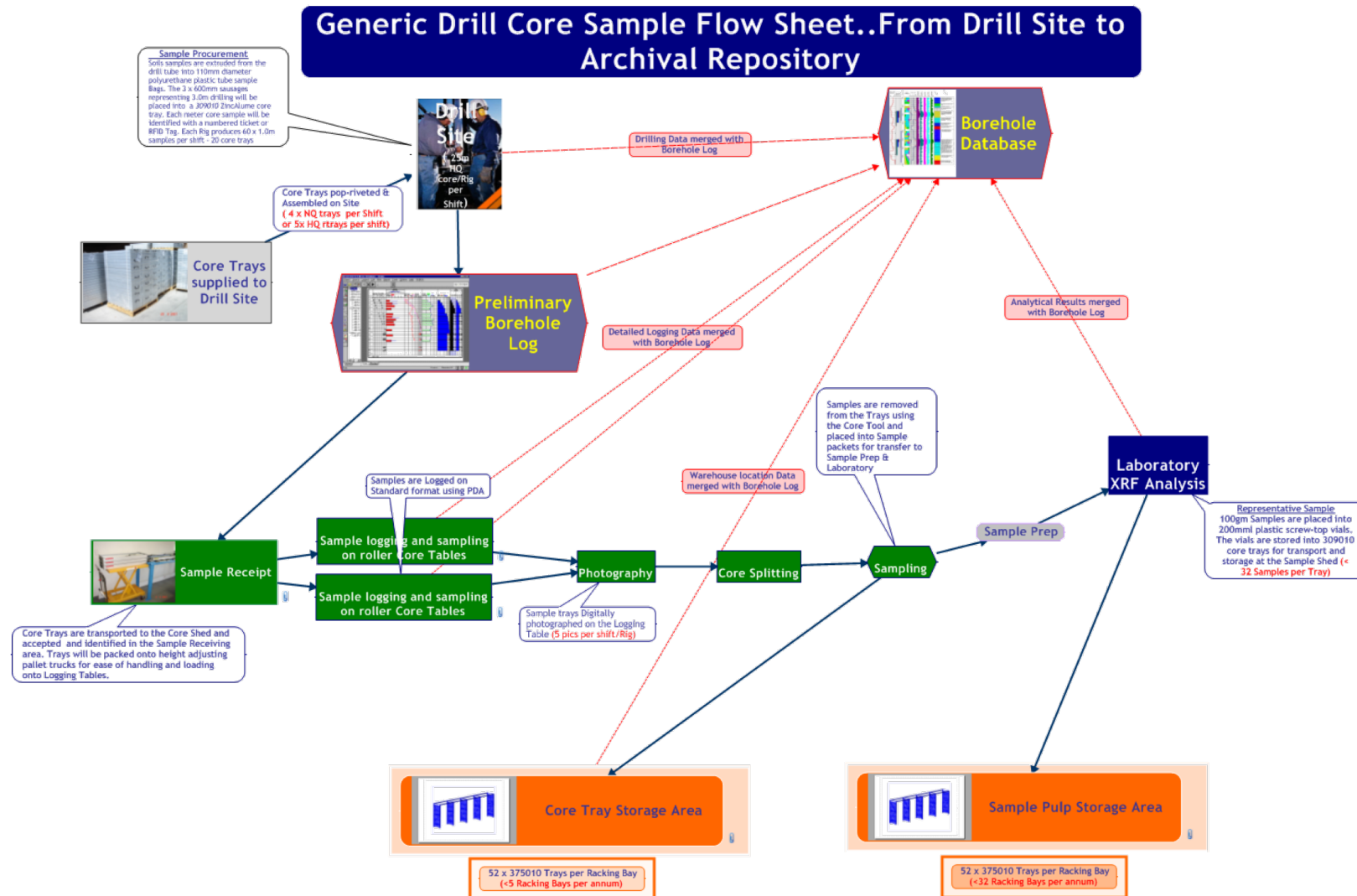
# Africa Region

## Generic Core Shed Model

<b>CORE SHED</b>	
Materials & Manufacture	Standard 18m x 36m x 3.6m Shed
Civils & Construction	Construction ex transport
<b>Core Racks</b>	
R1510.00 per Rack	200 - 340 Racking Bays per Shed
<b>Core Logging Tables</b>	
R1956.00 per Logging Table	20 Logging Tables per Shed
<b>Core Trays</b>	
R95.00 average 37 Series trays	40 Core Trays per Racking Bay
<b>SUB-TOTAL</b>	
<b>Sampling Consumables</b>	
As % of Core trays sales 2007	40% Core Trays Sales
<b>Sampling Equipment</b>	
Manufactured Aparatus	4% of Core Trays Sales
CoreWise Saw	1 Coresplitter per every 3 shed
<b>Geological Equipment</b>	
Geological Accessories - Non-core Products	25% Sampling Consumables

# Core Shed Project Management

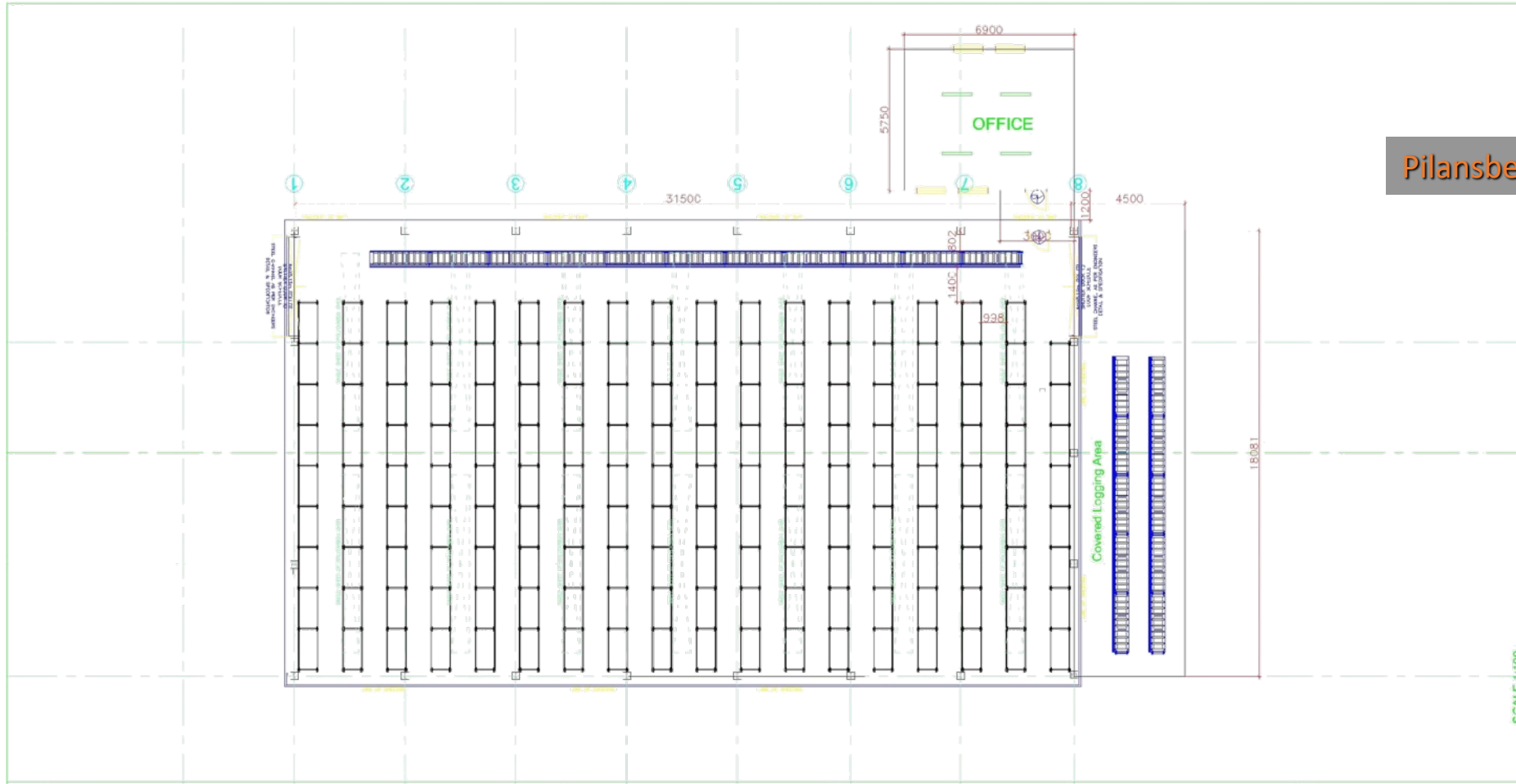
## 1. Preliminary consultation re Core flow sheet and requirements etc





# Core Shed Project Management

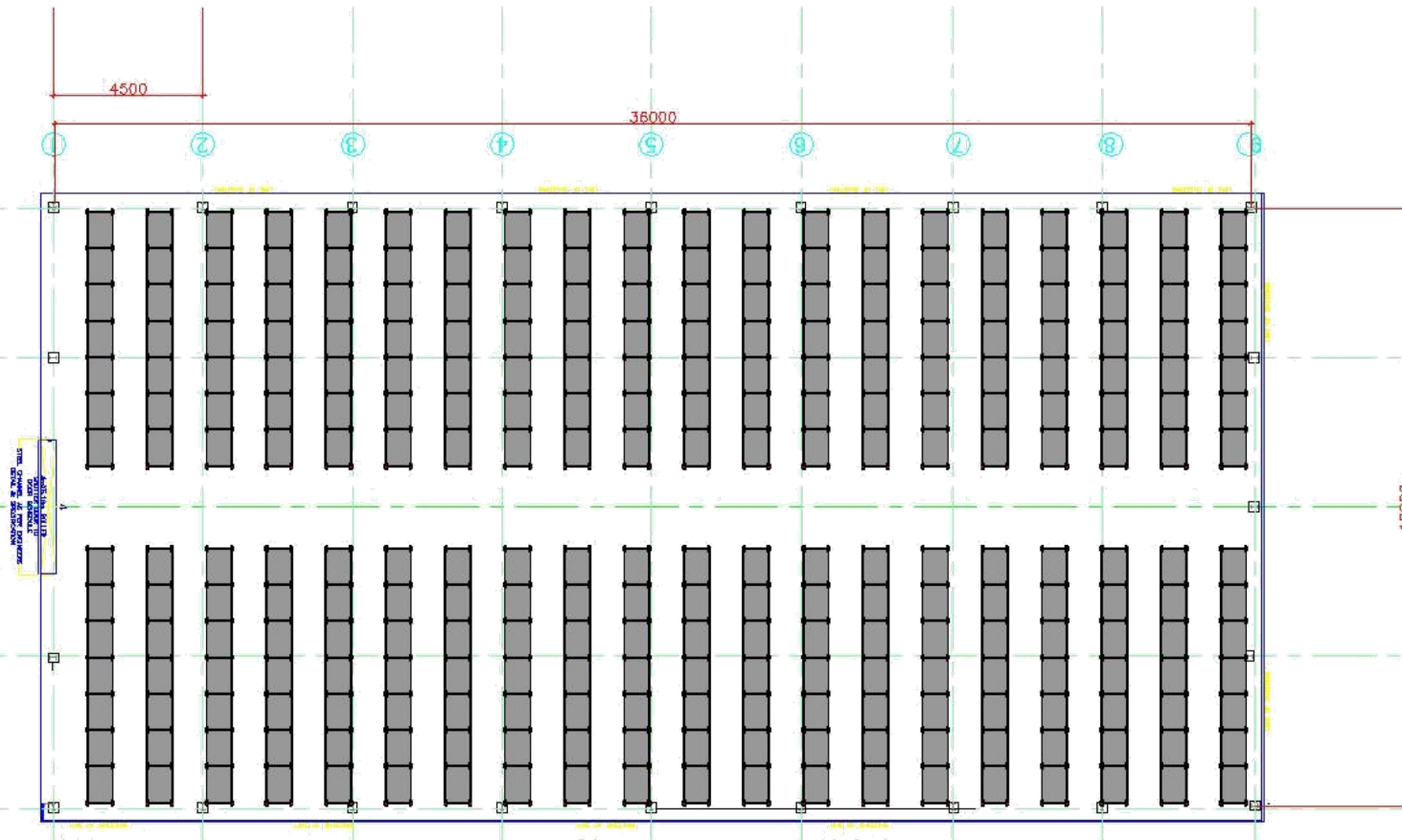
## 2. Layout and design



Pilansberg Platinum Mine - RSA

# Core Shed with trays stored in a Racking system

- greater access, limited capacity



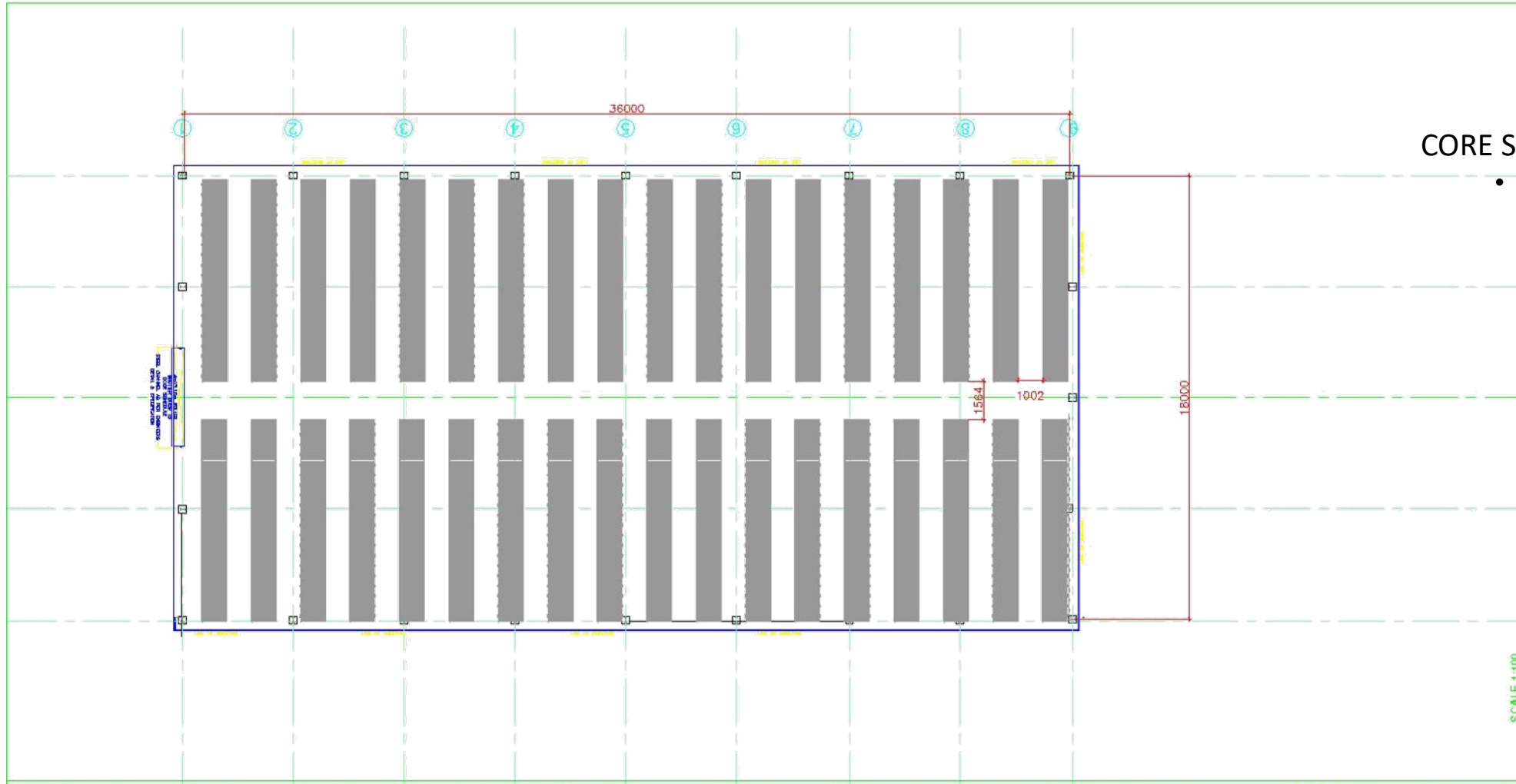
## • CORE SHED CAPACITY

- 280 Racking Bays per shed
  - 8950 x 379010 1.0m Core Trays
    - 35890m PQ Core
  - 10640 x 376310 1.0m Core Trays
    - 52890m HQ Core
  - 10640 x 375010 1.0m Core Trays
    - 35890m NQ Core
  - 11200 x 373810 1.0m Core Trays
    - 100600m BQ Core

SCALE 1:100

# Core Shed with trays stored in a Stacking system

- limited access, greater capacity



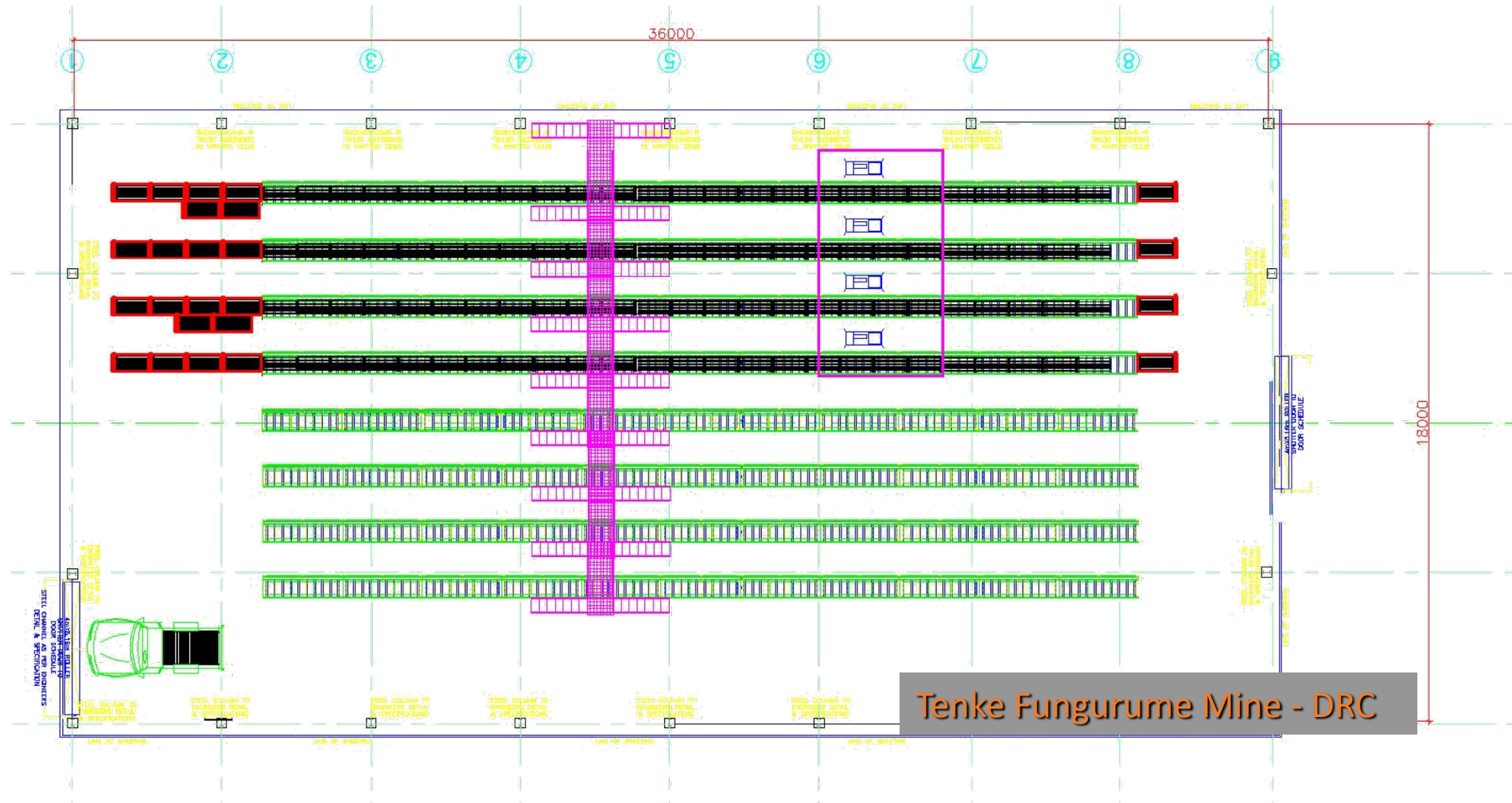
## CORE SHED CAPACITY

- 720 Stacked Bays per shed
  - 11520 x 379010 1.0m Core Trays
    - 46000m PQ Core
  - 15120 x 376310 1.0m Core Trays
    - 75600m HQ Core
  - 21600 x 375010 1.0m Core Trays
    - 151200m NQ Core
  - 27000 x 373810 1.0m Core Trays
    - 216000m BQ Core



# Core Shed Project Management

## 3. Costing and Budget quotations



# Core Shed Project Management

## 5. Shed Manufacture and On-site construction and Management

**UCP Africa(Pty) Ltd is regarded as one of the premier suppliers of specialized technical, mining and industrial equipment, as well as a leading supplier of new and pre-owned earthmoving equipment, sourced locally and internationally.**



**9 x 20 Open Shed**



**9 x 15 x 4.2 Drill Store**



**20 x 30 x 5 Core Store**



**Office Complex**



## 6. On-site construction and management





# Core Shed Project Management

## 7. Materials handling equipment



Mobile transporters/lifters



Stackers



Level loaders



Lifting tables



# Core Shed Project Management

1. Preliminary discussions with Geologist - Core flow sheet
2. Layout and design – every requirement differs
3. Costing and quotations
4. Manufacture and supply of Core trays, Core Tables and Core Racks
5. On-site construction and management
6. Materials handling equipment
7. Warehouse database management system

